



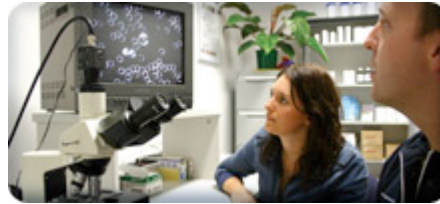
Take a Better View of your Health with Hemaview™

Hemaview™ is a form of live blood screening which is used to help us improve your health more quickly and efficiently. To do a screening we require one or two drops of your blood which then get placed under a dark field microscope. Your blood sample will enable us to investigate the health, size and shape of your red blood cells, the ratios and activity of your white blood cells, the level of cell damage occurring in your body, your risk of stroke or cardiovascular disease, the level of inflammation in your body, how well your liver function is working, and whether you have certain nutrient deficiencies present.

You may have had blood tests before, but nothing compares to seeing your own blood live on a screen and having what you are seeing explained to you.

Just look at the results

Our staff are fully trained to screen your blood and explain how different aspects may relate to your health. They will also be able to print off a report for you with some pictures so that you can keep track of your own progress. Our medical herbalist, Sarah can work with you to develop a treatment program to improve your health. Not only will you feel the difference, but with Hemaview™ you may see changes in your blood as your treatment progresses.

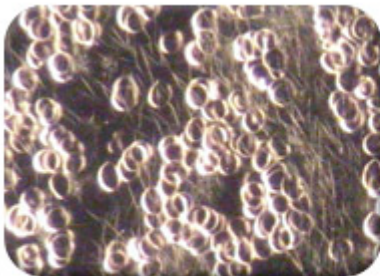


Accurate & Reliable

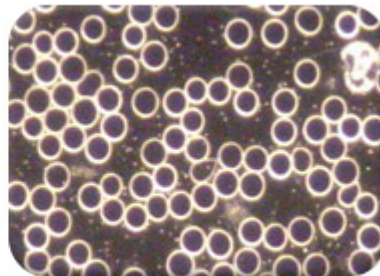
Hemaview™ is based on the medical science of Hematology. It provides an accurate and immediate indication of the state of your general health. It does not replace most of the blood tests you would get done through your doctor, but it can show a lot of additional information and the rate of your progress. It is also a great tool for ascertaining whether conditions such as leaky gut and allergies are contributing to your health problems.

Seeing is believing

Hemaview™ lets you take a real part in managing and understanding your health. Through a viewing of your living blood, we can develop more effective health strategies that are tailor-made for you.



Before



After